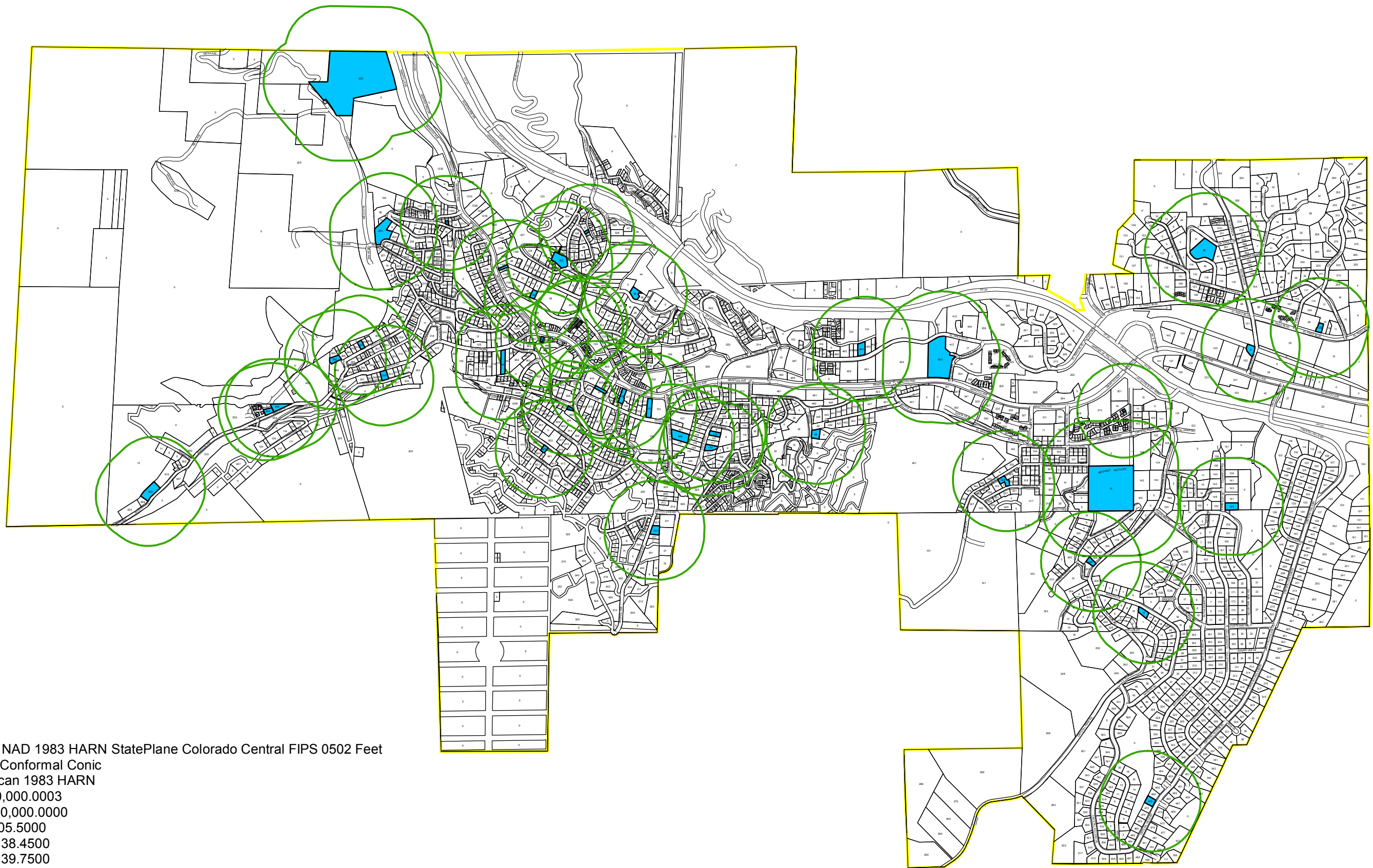


# City of Manitou Springs: Vacation Rental Map



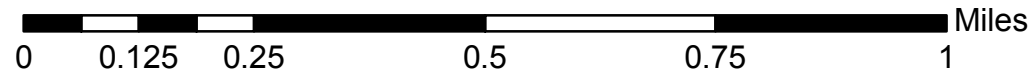
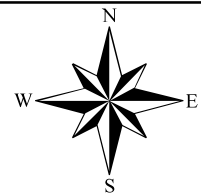
Coordinate System: NAD 1983 HARN StatePlane Colorado Central FIPS 0502 Feet  
 Projection: Lambert Conformal Conic  
 Datum: North American 1983 HARN  
 False Easting: 3,000,000.0003  
 False Northing: 1,000,000.0000  
 Central Meridian: -105.5000  
 Standard Parallel 1: 38.4500  
 Standard Parallel 2: 39.7500  
 Latitude Of Origin: 37.8333  
 Units: Foot US

Updated: 01/11/2018



CITY OF MANITOU SPRINGS

This draft document was prepared for internal use by the City of Manitou Springs, CO. The City makes no claim as to the accuracy or completeness of the data contained hereon. Due to security concerns, The City requests that you do not post this documents on the internet or otherwise make it available to persons unknown to you.



## Legend

- Vacation Rentals Property
- 500 Ft. Separation Distance
- Parcels
- Streets
- City Limits