



From the desk of:

Shelley Cobau, CFM
Interim Public Services Director
606 Manitou Avenue
Manitou Springs, Colorado 80829

Direct: 719-685-2605
Fax: 719-685-5233
scobau@comsgov.com
www.manitouspringsgov.com

Memorandum

To: Manitou Springs City Council
From: Shelley Cobau, CFM, Interim Public Services Director
Cc: Jason Wells, City Administrator
Date: April 15, 2016
Re: Public Services Division, Monthly Report

1. LIBRARY SEWER LINE EMERGENCY REPLACEMENT

- a. Sidewalk replacement is complete. Disturbed areas of turf will be raked and reseeded. This job is 90% complete.

2. PROPOSALS

- a. Staff is developing contracts, gathering bids and/or developing RFP's for twelve projects:
 - i. Mineral Springs monitoring well
 - ii. Recreation Center Pedestrian Bridge
 - iii. Stormwater Master Plan
 - iv. Hiawatha Gardens Parking Lot and Shuttle Stop
 - v. Single Hauler Trash
 - vi. Bridge Maintenance (mortar repairs)
 - vii. Memorial Hall Helical Piers
 - viii. Cemetery Roof
 - ix. Cemetery Trees
 - x. Schryver Parking Lot Lighting
 - xi. Park Turf Maintenance
 - xii. Water Distribution System Master Plan

3. STANDARDIZING TASKS

- a. A draft Street Summary/Standard Operating Procedures Manitou Streets has been prepared by staff (attached). This is currently under review, but represents a great forward movement to developing a detailed needs based capital improvement plan for street repairs and improvement.
- b. Checklists and an inspection procedure has been established for Parks staff. Staff will conduct daily inspections and fill out a standard form. The Operations Foreman will conduct weekly inspections and I will conduct monthly random inspections. This should assist management in assuring all Parks are kept at their very best.

- c. A Striping Plan for this season has been developed (attached). This is an aggressive schedule to get all areas stripped before our tourists, below are photos of the employee lot. This was conducted first, so crews could "practice" their striping techniques.

4. TRAINING

- a. Stormwater staff attended **Certified Professional Stormwater Inspector** training in Denver. Two staff members are now nationally certified for five years.
- b. CDL training is ongoing on Saturdays through early May. By mid-May all PSD maintenance staff will hold Class B Commercial Driver's Licenses. Several employees will be getting a Class A endorsement.



5. DEPARTMENTAL UPDATE:

a. STREETS

- i. Manitou Avenue Pedestrian and Drainage Improvement Project An Open House will be conducted in Memorial Hall on Thursday, April 14, 2016. The 30% design plans will be presented for public input. The engineer is coordinating with utility companies, and will be attending the monthly Flood Recovery meeting to make sure all projects are adequately coordinated to minimize the impact to businesses and residents.
- ii. Pavement Overlays: The street overlays of Bevers, Duclo, Sutherland, Osage, El Monte are set to begin on 4/18/16. All residents have been notified of parking restrictions via door hangers and cones have been set in these areas to ready residents for the two-day and three-day closures anticipated.
- iii. Staff teamed together and fixed large potholes at Spencer and Canon and also on Crystal Hills Road. This was done in addition to their regular work order requests (88 total)

b. FACILITIES

- i. City Hall Subsidence Engineering drawings were received. The City attorney is coordinating between the design engineer and the engineering firm that designed the curtain wall to determine next steps.
- ii. Crews painted the new office for the City Clerk and her Assistant. Once complete, the Mayor's area will be set up, back in the Administrative Office.
- iii. Custodial staff cleaned up after a large event in Memorial Hall. Event coordinators will be contacted as numerous issues arose and the deposit will be retained due to these issues.
- iv. A total of 75 Work Order Requests were input to the system for general building maintenance issues.

c. PARKS

- i. Parks has 215 Work Order Requests, primarily for daily and weekly park inspections.
- ii. Staff completed the RFP for Gardening Services. Proposal responses are due on April 18, 2016
- iii. Staff met with representatives from Bear Safe Manitou, and will incorporate their ideas into the single hauler RFP which is currently being drafted. We will ask for offerors to give us pricing for a variety of trash bins, for municipal receptacles and for residential containers.

Once we have received responses, we will bring these numbers to council for consideration before drafting a contract.

d. WATER AND SEWER

- i. Staff met with MSF representatives to discuss Phase II of the Aquifer Study. Staff will get our on-call surveyor to develop easements as needed for the selected monitoring well site. Staff will contact Halliburton and get the material needed to plug the well at Seven Minute and at Hiawatha Gardens. Barnhardt is meeting staff on Friday, April 15 at Hiawatha Gardens to determine a plan of action for the spring in the basement of that facility.
- ii. 13.2 million gallons of water was treated by our plant in March, routine maintenance at the reservoir will begin as temperatures rise and the road is now clear for standard vehicles.
- iii. Sewer mains are being inspected and videotaped, with routine maintenance being conducted on these lines.
- iv. Staff attended WAAP meeting to discuss utility line conflicts near the devolution line.

e. FLOOD RECOVERY (reported by-weekly in separate report)



From the desk of:

Brad Walters, Public Services Foreman
606 Manitou Avenue
Manitou Springs, Colorado 80829

Direct: 719-685-2558
Fax: 719-685-1386
bwalters@coms.gov.com
www.manitouspringsgov.com

Memorandum

To: Lynn Johnson, Street Department Team Lead
From: Brad Walters, Public Services Operations Foreman
Cc: Shelley Cobau, Interim Public Services Director
Date: April 05, 2016
Re: Parking and Street Restriping Plan

Lynn,

Below is a restriping schedule to help you schedule your crew's time to get the downtown parking, and no parking zones restriped as well as the rest of the double yellow lines throughout the town.

Doing a quick measurement and assuming that the lines will be 4" wide and 16 Mills thick you will need approximately 200 Gallons of yellow and 100 Gallons of white, the paint that we prefer is the Diamond Vogel TM-Series Rubber Based paint, the yellow is TM-3788 Lead Free and the white is TM-1733 Lead Free.

As you know weather and other pressing issues may cause delays in this schedule so the schedule can and will be modified as needed.

Here is the schedule I have come up with, please let me know what you think.

- Week of April 11th:
 - Restripe the parking spaces and yellow curbs along Manitou Ave from City Hall to Park Ave
 - Restripe the parking spaces and yellow curbs along Canon Ave from Manitou Ave to Grand Ave
 - Restripe the parking spaces and yellow curbs along Park Ave
 - Restripe the Canon Ave Parking Lot

- Week of April 18th
 - Restripe parking spaces and yellow curbs around Memorial Park along El Paso Blvd, Old Mans Trail and Manitou Ave
 - Restripe the double yellow on Ruxton Ave,
 - Restripe the parking spaces and yellow curb along Ruxton Ave
 - Restripe double yellow lines on Canon Ave from Park Ave to Spencer Ave
 - Restripe double yellow lines on Pawnee Ave from Manitou Ave to Midland Ave

- Week of April 25th
 - Restripe the double yellow lines on El Paso Blvd
 - Restripe the double yellow lines and yellow curbs along El Monte Pl and Oak Pl

- Restripe the turn lane on Oak Pl
- Week of May 2nd
 - Restripe the double yellow lines and yellow curbs along Crystal Park Road from Manitou Ave to the Crystal Park Gate
- Week of May 9th
 - Restripe the double yellow lines and yellow curbs along Crystal Hills Blvd from Manitou Ave to Crystal Park Road

The Metro parking lot and the Smischny parking lot will also need to be restriped as soon as the Metro Board has them sealed, I will let you know when this will happen as soon as I know.

Thanks - Brad

2016

Manitou Springs Street Conditions & 5 Year Capital Plan



Brad Walters

Public Works Foreman

4/4/2016

Street System Survey

In the fall of 2015 the Public Works Department conducted a survey of our Street System; they were rated on a scale of 1 to 10 with 1 being Poor and 10 being Good. Each person of the Street

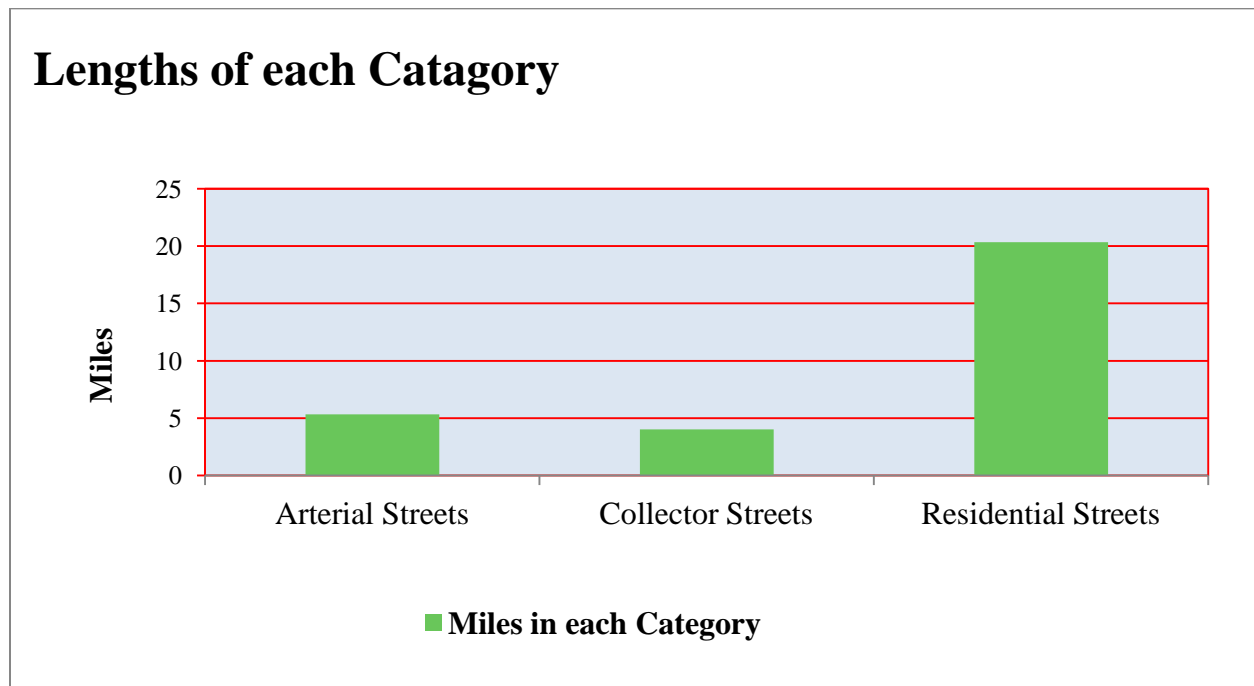
Rating System	
1 to 3	Reconstruction
4 to 5	Major Repairs
6 to 7	Moderate Repairs
8 to 10	Routine Repairs

Department was given the task of rating each street, and then we took all of the ratings and compared them and came up with the final rating of each Street.

The categories of the rating system are, ratings from 1-3 are in need of being be reconstructed, 4-5 are in the category of needing Major Repairs, 6-7 are in the category of Moderate Repairs, and 8-10 are in the category of Routine Maintenance.

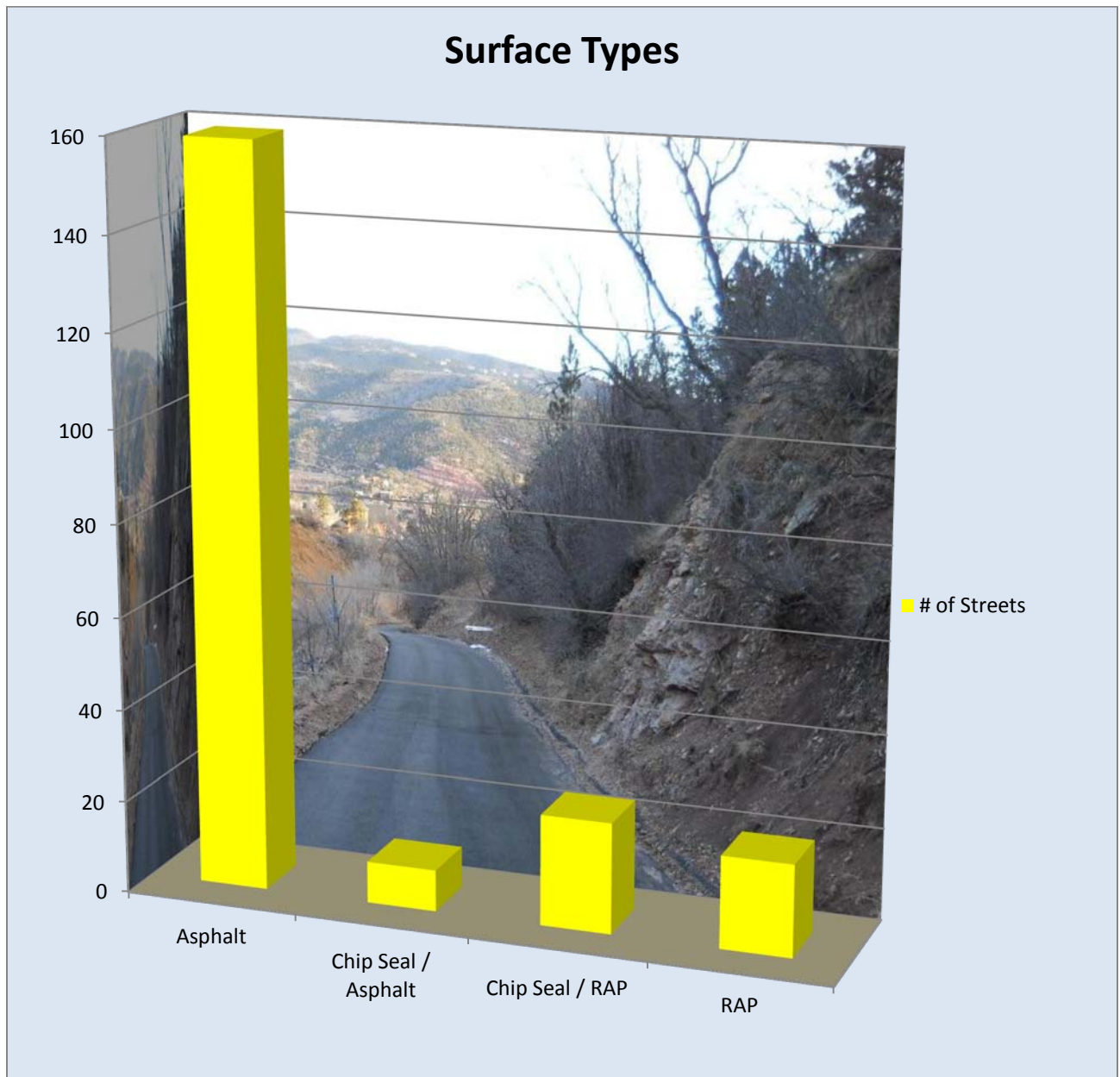
For several years the Public Works Department has graded the streets with the use of the Highway User Tax Fund reporting system through CDOT, this rating system had three categories: Good, Fair and Poor.

The Manitou Springs Street System in made up of 5.34 Centerline Miles of Arterial Streets 4.0 Centerline Miles of Collector Streets and 20.35 Centerline Miles of Residential or Local Streets for a total system of 29.35 Centerline Miles, or 51.10 Lane Miles (see chart below).



Surface Types

These have a makeup of three types of surfaces, The first is Asphalt, the second is a Recycled Asphalt Products otherwise known as “RAP”, this is old Asphalt that is milled up when a road is overlaid, and the third type of road surface is a “Chip Seal”, this is a process of sealing a road to prolong the life of the surface. The City currently has 159 Asphalt segments, 9 Chip Seal over Asphalt segments, 24 Chip Seal over RAP segments and 20 RAP segments (see chart below), the City no longer has any dirt segments in it street system the last one was covered in the summer of 2011.



The Health of the System

The system is made up of 12 Arterial Segments which 8.33% are in need of being reconstructed, 8.33% are in need of major repairs, 41.67% need moderate repairs and 41.67% of the segments fall into the routine repairs category. The Arterial segment that fall into the Reconstruction category is Manitou Avenue between Crystal Park Rd and El Paso Blvd. it scored a 3 and the rebuilding of this section is scheduled to happen this fall by CDOT. Although Manitou Avenue is a CDOT Owned and Maintained Street it is considered a local Arterial and this is why we included it in this report.

There are 21 Collector Segments which no segments fall into the first two categories of Reconstruction or Major Repairs, and 33.33% need moderate repairs and 66.67% of the segments fall into the routine repairs category.

The system also has 179 Residential Segments which 1.12% are in need of being reconstructed, 12.85% are in need of major repairs, 26.82% need moderate repairs and 59.22% of the segments fall into the routine repairs category. (See chart below and graph on the next page)

Number of Segments per Ratings and % of Segments per Category						
	Arterials	% of Arterials	Collectors	% of Collectors	Residential	% of Residential
1 to 3	0	0.00%	0	0%	4	1.12%
4 to 5	2	16.67%	0	0%	25	12.85%
6 to 7	5	41.67%	7	33.33%	50	26.82%
8 to 10	5	41.67%	14	66.67%	100	59.22%
Totals	12	100%	21	100%	179	100%

Street Pothole Repair and Patching Procedures

- Potholes
 - Cold Asphalt Mix
 - Clean out the pothole of any loose debris and make sure it is free of ice and water.
 - Fill the hole with cold asphalt mix
 - Rake the mix out so that it is flat and about ½" to 1" above the road surface
 - Roll the patch
 - Fill in any low areas and re-roll
 - Hot Asphalt Mix
 - Clean out the pothole of any loose debris and make sure it is free of ice and water.
 - If the edges keep breaking off then saw cut out bad areas and patch (see patching procedures below)
 - Tack the edges of the pothole
 - Fill the hole with hot asphalt mix
 - Rake the mix out so that it is flat and about ½" to 1" above the road surface
 - Roll the patch
 - Fill in any low areas and re-roll
- Patching
 - Saw cut the area at least 1' back from the patch on all sides, or as far as needed to get to stable asphalt.
 - Remove old asphalt
 - Re-grade the sub grade to a minimum depth of 4"
 - Compact the sub grade
 - Fill the patch area for the first lift to a maximum of 2" deep with Hot Asphalt Mix
 - Rake it out smooth and flat
 - Roll the first 2" lift until compacted
 - Roll the patch in several directions i.e. left to right, front to back and at 45° to the patch
 - Fill the patch with the Final 2" lift of Hot Asphalt Mix
 - Rake the mix out so that it is flat and about ½" to 1" above the road surface
 - Roll the Final 2" lift until compacted
 - Roll the patch in several directions i.e. left to right, front to back and at 45° to the patch

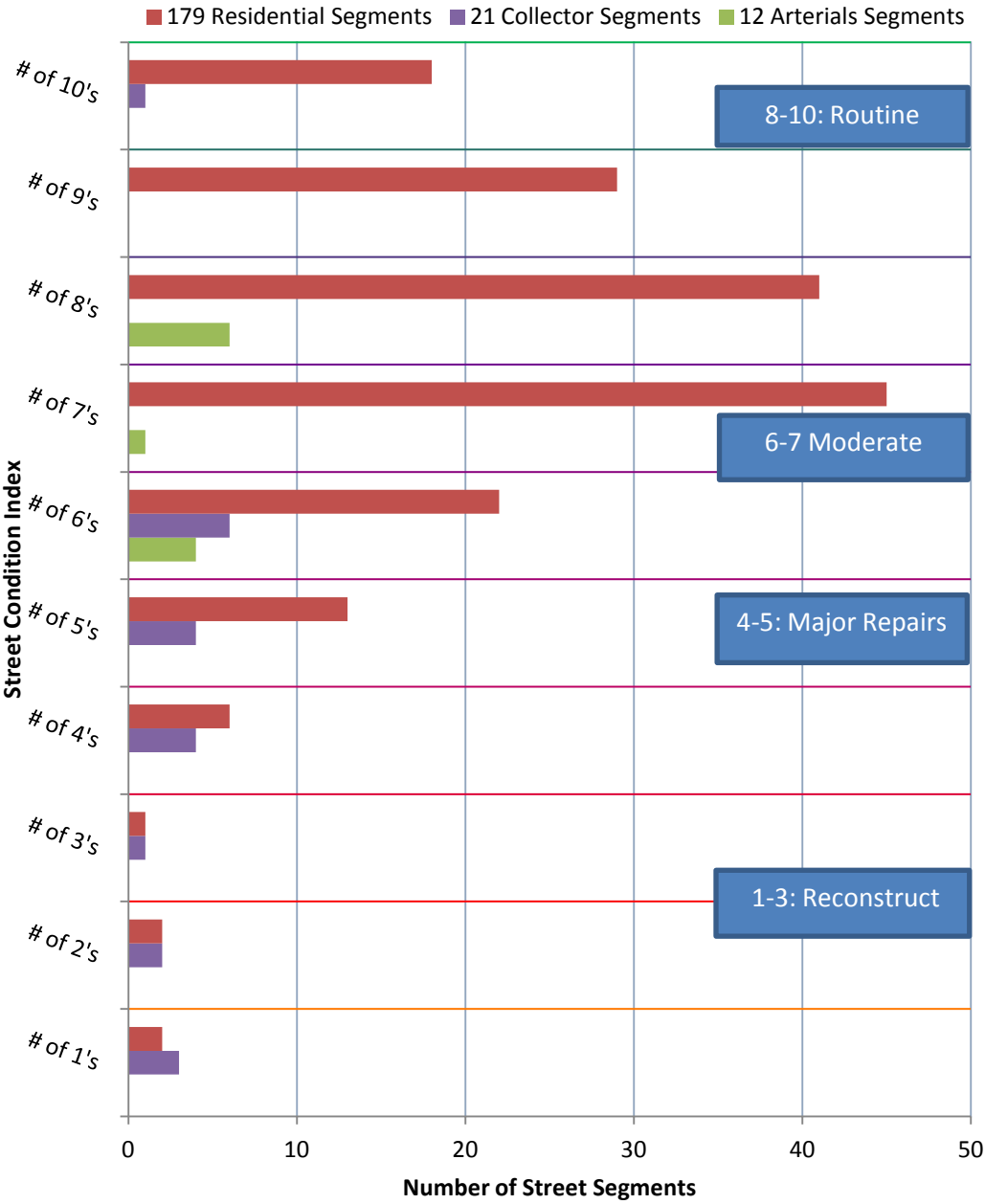
5 Year Capital Improvement Plan

The 5 Year Capital Improvement plan is made up of the lowest rated streets from the 2015 Street System Survey, as this survey data changes from time to time the capital plan must also change to meet the needs of our deteriorating street system. At current pricing it would cost an estimated \$10 Million to repave all 51.1 Lane Miles of our city's street system. To repave every street in town once every 20 years

it would cost an average of \$500K per year, with the funding we currently have it will take over 40 years to repave every street.

5 Year Streets Capital Improvement Plan						
Street	Length (ft)	Width (ft)	ft ²	From	To	Approximate Cost
2016						
Pawnee	900	40	36,000	Midland Ave	Manitou Ave	\$90,000.00
Crystal Hill Blvd	2000	35	70,000	Manitou Ave	Palisade Cr	\$175,000.00
2016 Approximate Total						\$265,000.00
2017						
Osage Ave	600	30	18,000	Ruxton Ave	Mohawk Ave	\$45,000.00
Minnehaha Ave	850	25	21,250	Manitou Ave	Pine Ridge Ave	\$53,125.00
Crystal Park Rd	3100	25	77,500	Crystal Hills Blvd	South City Limit	\$193,750.00
2017 Approximate Total						\$291,875.00
2018						
Crystal Hill Blvd	3000	36	108,000	Bevers Pl	Shuterland Rd	\$270,000.00
2018 Approximate Total						\$270,000.00
2019						
Ute Trail	500	25	12,500			\$31,250.00
E Fountain Pl	1800	25	45,000	South Path	Manitou Ave	\$112,500.00
South Path	800	25	20,000	High St	Peakview	\$50,000.00
Manitou Pl	500	25	12,500	All	All	\$31,250.00
2019 Approximate Total						\$225,000.00
2020						
Fountain Pl	700	20	14000	All	All	\$35,000.00
Pine Ridge	1400	25	35000	All	All	\$87,500.00
Crystal Hill Blvd	1,500	35	52500	Sutherland Rd	Palisade Cr	\$131,250.00
2020 Approximate Total						\$253,750.00

Street Condition Summary



Below is a list of Street Segments and their ratings.

Street Name	Condition of Road	Surface Type	Project Year	From Feature	To Feature
Agate Ave	10	Asphalt	2011	End	Fairmont Ave
Canon Ave	10	Asphalt	0	Park Ave	Width Change
Cliff Rd	10	Asphalt	2015	El Paso Bd	End
Elk Path Ave	10	Asphalt	0	Delaware Rd	Peakview Bd
Garnet Ave	10	Asphalt	2011	Edgewood Ave	Fairmont Ave
Glen Rd	10	Asphalt	0	Canon Ave	End
Grand Ave	10	Asphalt	2010	Begining	Canon Ave
Jade Ave	10	Asphalt	2011	Pawnee Ave	End
Lafayette Rd	10	Asphalt	0	Canon Ave	Lovers Ln
Lincoln Ave	10	Asphalt	0	Floral Path	Washington Ave
Lincoln Ave	10	Asphalt	0	Begining	Floral Path
Manitou Ave	10	Asphalt	0	Crystal Park Rd	East City Limit
Mayfair Ave	10	Asphalt	0	Bridge	El Paso Bd
Modock Pl	10	Asphalt	2015	Prospect Pl	Duclo Ave
Pilot Knob Ave	10	Asphalt	2007	Ruxton Ave	Illinois Ave
Pumapath Ave	10	Asphalt	2011	Peakview Bd	Fountain Pl
Sutherland Rd	10	Asphalt	0	Oak Ridge	Sutherland Pl
Waltham Ave	10	Asphalt	0	Captiol Hill Ave	Manitou Ave
Banks Pl	9	Asphalt	2002	Plainview Pl	Gate
Cave Ave	9	Asphalt	2004	Spencer Ave	Manitou Te
Cedar Ln	9	Asphalt	2010	Width Change	Cedar Ln
Crystal Hills Blvd	9	Asphalt	0	Crystal Park Rd	Sandra Ln
Crystal Hills Blvd	9	Asphalt	0	Sandra Ln	Bevers Pl
El Paso Blvd	9	Asphalt	0	Becker Ln	City Limits
El Paso Blvd	9	Asphalt	0	Manitou Ave	Garden Dr
Floral Path	9	Asphalt	0	Washington Ave	Lincoln Ave
Grant Ave	9	Asphalt	2005	End	Sheridan Pl
Hydro St	9	Asphalt	2010	Ruxton Ave	End
Illinois Ave	9	Asphalt	1997	Pilot Knob St	Mesa Ave
Iron Rd	9	Asphalt	2006	Michigan Ave	Capitol Hill Ave
Kreg Ln	9	Asphalt	2006	Crystal Hills Bd	Crystal Hills Bd
Massachus Ave	9	Asphalt	0	Ruxton Ave	End
Mayfair Ave	9	Asphalt	0	Manitou Ave	Bridge
Mica Rd	9	Asphalt	2011	Edgewood Ave	Fairmont Ave
Oak Pl	9	Asphalt	0	Santa Fe Pl	Manitou Ave
Oldmans Tr	9	Asphalt	0	Manitou Ave	El Paso Bd
Peakview Bd	9	Asphalt	2011	Elk Path	Puma Path
Rockledge Court	9	Asphalt	0	Rockledge Ln	Cds
Rockledge Lane	9	Asphalt	0	El Paso Bd	Cds
Seneca Rd	9	Asphalt	2011	End	Puma Path
Sheridan Pl	9	Asphalt	2005	Lincoln Ave	Grant Ave
Shoshone Pl	9	Asphalt	2006	Midland Ave	High Rd
Spur Rd	9	Asphalt	2011	Plainview Pl	Santa Fe Pl

Tyler St	9	Asphalt	0	Plainview Pl	El Monte Pl
Via Loma	9	Asphalt	0	Via Piedras	End
Via San Miguel	9	Asphalt	0	Via Vallecito	Becker Ln
Willa Ln	9	Asphalt	2012	Deneta Dr	Crystal Park Rd
Becker Ln	8	Asphalt	0	El Paso Bd	Chula Vista
Canon Ave	8	Asphalt	0	Width Change	Bridge
Cherokee Rd	8	Asphalt	2006	Elk Path	Oklahoma Rd
Church St	8	Asphalt	0	Brook St	Ruxton Ave
Deer Path Ave	8	Asphalt	0	Pawnee Ave	Oklahoma Rd
Deneta Dr	8	Asphalt	0	Willa Ln	Clarksley Rd
Deneta Dr	8	Asphalt	0	Willa Ln	Willa Ln
Edgewood Ave	8	Asphalt	2012	Pawnee Ave	Garnet Ave
El Monte Pl	8	Asphalt	0	Manitou Ave	Fountain Pl
Fairmont Ave	8	Asphalt	2011	Pawnee Ave	End
Fairview Ave	8	Asphalt	0	Ruxton Ave	End
Kris Ln	8	Asphalt	0	Sutherland Pl	Crystal Hills Bd
Kris Ln	8	Asphalt	0	Crystal Hills Bd	End
Manitou Ave	8	Asphalt	0	West City Limit	Minnehaha Ave
Mesa Ave	8	Asphalt	0	Duncan Ave	Pine Ridge Ave
Midland Ave	8	Asphalt	0	Arizona Rd	Roca St
Oak Pl	8	Asphalt	0	End	Terrace Pl
Palisade Circle	8	Asphalt	2006	Crystal Hills Bd	Crystal Hills Bd
Pawnee Ave	8	Asphalt	0	Eagle Ave	Midland Ave
Plainview Pl	8	Asphalt	0	Gate	Poplar Pl
Poplar Pl	8	Asphalt	0	Plainview Pl	Crystal Park Rd
Prospect Pl	8	Asphalt	0	Manitou Pl	NAveajo Ave
Prospect Pl	8	Asphalt	0	NAveajo Ave	Roca St
Ruxton Ave	8	Asphalt	2007	Width Change	Width Change
Ruxton Ave	8	Asphalt	2007	Width Change	Montcalm St
Ruxton Ave	8	Asphalt	2009	Osage Ave	Manitou Ave
Ruxton Ave	8	Asphalt	2014	Montcalm St	Osage Ave
Ruxton Ave	8	Asphalt	2005	End	Hydro St
Ruxton Ave	8	Asphalt	2007	Hydro St	Width Change
Santa Fe Pl	8	Asphalt	2012	Oak Pl	Spur Rd
Spencer Ave	8	Asphalt	2012	Cave Ave	Canon Ave
Sutherland Pl	8	Asphalt	0	Sutherland Rd	Sutherland Rd
Via Linda Vista	8	Asphalt	2011	Mariather	End
Via Sierra Grande	8	Asphalt	0	Becker Ln	Via Piedras
Via Sierra Grande	8	Asphalt	0	Via Piedras	End
Via Vallecto	8	Asphalt	2011	El Paso Bd	Width Change
Washington Ave	8	Asphalt	0	Washington Bypass	El Paso Bd
Washington Ave	8	Asphalt	2012	Canon Ave	Washington Bypass
Willa Ln	8	Asphalt	2012	Deneta Dr	Deneta Dr
Winter St	8	Asphalt	2005	Ruxton Ave	Ruxton Ave
Becker Ln	7	Asphalt	0	Manitou Ave	El Paso Bd
Becker Ln	7	Asphalt	0	Chula Vista	City Limits
Bevers Pl	7	Asphalt	0	Crystal Hills Bd	End
Capitol Hill Ave	7	Asphalt	0	Ruxton Ave	Pilot Knob St

Crystal Hills Blvd	7	Asphalt	1997	Bridge	Manitou Ave
Crystal Park Rd	7	Asphalt	2006	Poplar Pl	Sandra Ln
Crystal Park Rd	7	Asphalt	2006	Stover Ln	Crystal Hills Bd
Crystal Park Rd	7	Asphalt	2006	Sandra Ln	Stover Ln
Crystal Park Rd	7	Asphalt	2006	Manitou Ave	Poplar Pl
Deer Path Ave	7	Asphalt	0	Oklahoma Rd	Manitou Ave
Eagle Ave	7	Asphalt	0	Crystal Ave	End
Fountain Pl	7	Asphalt	2012	Puma Path	El Monte Pl
Fountain Pl	7	Asphalt	0	Southpath	Puma Path
Garden Of Gods Pl	7	Asphalt	2012	El Paso Bd	Manitou Ave
High St	7	Asphalt	0	Pawnee Ave	Deer Path
High St	7	Asphalt	0	Deer Path	Southpath
Indian Oaks Pl	7	Asphalt	0	Sutherland Rd	End
Indian Oaks Pl	7	Asphalt	0	Indian Oaks Pl	End
Karen Lee Ln	7	Asphalt	0	Clarksley Rd	Crystal Hills Bd
Manitou Terrace	7	Asphalt	2011	Begining	Cave Ave
Michigan Ave	7	Asphalt	2010	Iron Rd	Duncan Ave
Midland Ave	7	Asphalt	2014	Roca St	Pawnee Ave
Montcalm St	7	Asphalt	0	Capitol Hill Ave	Pilot Knob St
Mountain View Ln	7	Asphalt	0	End	Mountain View Rd
Navajo Ave	7	Asphalt	0	Prospect Pl	Duclo Ave
Oak Pl	7	Asphalt	0	Plainview Pl	Santa Fe Pl
Oklahoma Rd	7	Asphalt	2010	Delaware Rd	Deer Path
Otoe Pl	7	Asphalt	0	Duclo Ave	Manitou Ave
Palisade Circle	7	Asphalt	2006	Palisade Ci	End
Plainview Pl	7	Asphalt	2011	Poplar Pl	Spur Rd
Sandra Ln	7	Asphalt	0	Crystal Park Rd	Crystal Hills Blvd
Santa Fe Pl	7	Asphalt	0	End	El Monte Pl
Spencer Ave	7	Asphalt	2011	End	Cave Ave
Stover Ln	7	Asphalt	2006	Crystal Park Rd	Crystal Park Rd
Sutherland Pl	7	Asphalt	0	Crystal Hills Bd	Sutherland Rd
Sutherland Rd	7	Asphalt	0	Sutherland Pl	Crystal Hills Bd
Uinta Rd	7	Asphalt	0	Surface Change	Prospect Pl
Via Piedras	7	Asphalt	0	Sierra Grande	End
Delaware Rd	6	Asphalt	2012	Elk Path	Surface Change
El Paso Blvd	6	Asphalt	0	Garden Dr	Becker Ln
Manitou Ave	6	Asphalt	0	Minnehaha Ave	Old Manns Trail
Mohawk Ave	6	Asphalt	0	Prospect Pl	Osage Ave
Mountain View Rd	6	Asphalt	0	Sutherland Rd	Width Change
Mountain View Rd	6	Asphalt	0	Width Change	Clarksley Rd
Navajo Ave	6	Asphalt	0	Duclo Ave	Manitou Ave
Oak Ridge	6	Asphalt	0	End	Sutherland Rd
Park Ave	6	Asphalt	0	Manitou Ave	Canon Ave
Pilot Knob Ave	6	Asphalt	0	Illinois Ave	Capitol Hill Ave
Prospect Pl	6	Asphalt	0	Roca St	Pawnee Ave
Sutherland Rd	6	Asphalt	0	Crystal Park Rd	Sutherland Pl
Via Linda Vista	6	Asphalt	2005	El Paso Bd	Mariather
Crystal Hills Blvd	5	Asphalt	2010	Crystal Hills Bd	End

Crystal Hills Blvd	5	Asphalt	0	Bevers Pl	Palisade Ci
Crystal Park Rd	5	Asphalt	2006	Crystal Hills Bd	City Limits
Dudley Ave	5	Asphalt	0	CAve Ave	CAve Ave
Lovers Ln	5	Asphalt	0	Canon Ave	El Paso Bd
Manitou Pl	5	Asphalt	0	Osage Ave	Midland Ave
Mountain View Rd	5	Asphalt	0	Clarksley Rd	Sutherland Rd
Oak Pl	5	Asphalt	0	Terrace Pl	Plainview Pl
Pineridge Ave	5	Asphalt	0	Iron Rd	Minnehaha Ave
Southpath Ave	5	Asphalt	0	Surface Change	Manitou Ave
Sutherland Rd	5	Asphalt	0	Sutherland Pl	Oak Ridge Ln
Ute Tr	5	Asphalt	0	Minnehaha Ave	Manitou Ave
Via Escondedo Vally	5	Asphalt	2011	Via Vallecito	End
Duclo Ave	4	Asphalt	To be completes in spring 2016	Naveajo Ave	Pawnee Ave
El Monte Pl	4	Asphalt	To be completes in spring 2016	Fountain Pl	Tyler St
Minnehaha Ave	4	Asphalt	0	Pine Ridge Ave	Manitou Ave
Osage Ave	4	Asphalt	0	Ruxton Ave	Mohawk Ave
Osage Ave	4	Asphalt	To be completes in spring 2016	Mohawk Ave	Naveajo Ave
Via Maria Thersa	4	Asphalt	To be completes in spring 2016	Becker Ln	El Paso Bd
Crystal Hills Blvd	3	Asphalt	1997	Palisade Ci	Bridge
Manitou Terrace	1	Asphalt	FEMA?	Cave Ave	Bridge
Via Vallecto	1	Asphalt	FEMA Funded 2016	Width Change	End
Roca St	8	Chip Seal / Asphalt	2010	Midland Ave	Prospect Pl
Canon Ave	6	Chip Seal / Asphalt	2010	Str	Park Ave
Canon Ave	6	Chip Seal / Asphalt	2010	Manitou Ave	Str
Clarksley Rd	6	Chip Seal / Asphalt	2010	Crystal Hills Bd	End
Delaware Rd	6	Chip Seal / Asphalt	2010	Surface Change	Oklahoma Rd
Old Crystal Park Rd	6	Chip Seal / Asphalt	2010	Crystal Park Rd	End
Manitou Ave	2	Chip Seal / Asphalt	0	Old Nmanns Trail	Crystal Park Rd
Pawnee Ave	2	Chip Seal / Asphalt	2010	Midland Ave	Manitou Ave
Cedar Ln	7	Chip Seal / RAP	2011	El Paso Bd	Width Change
Chipeta Rd	7	Chip Seal / RAP	2011	Uinta Rd	Winona Rd
Elk Path Ave	7	Chip Seal / RAP	2010	Deer Path	End
Shoshone Pl	7	Chip Seal / RAP	2010	End	Midland Ave
Sotuh Side Rd	7	Chip Seal / RAP	2011	Pawnee Ave	End
Spur Rd	7	Chip Seal / RAP	2011	Chelton Rd	End
Tio Rd	7	Chip Seal / RAP	2011	Chipeta Rd	High Rd
Bond St	6	Chip Seal / RAP	2011	Begining	El Monte Pl
Capitol Hill Ave	6	Chip Seal / RAP	2010	Pilot Knob St	Iron Rd

Chelton Rd	6	Chip Seal / RAP	2011	End	Surface Change
Crystal Park Pl	6	Chip Seal / RAP	2010	Sunrise Rd	Crystal Park Rd
Duncan Ave	6	Chip Seal / RAP	2011	Michigan Ave	Pine Ridge Ave
Grandview Pl	6	Chip Seal / RAP	2011	Plainview Pl	End
High Rd	6	Chip Seal / RAP	2010	Uinta Rd	Shoshone Pl
Marbeck Rd	6	Chip Seal / RAP	2011	Crystal Park Pl	End
Terrace Pl	6	Chip Seal / RAP	2014	Grandview Pl	Oak Pl
Uinta Rd	6	Chip Seal / RAP	2011	Chipeta Rd	Surface Change
Duncan Ave	5	Chip Seal / RAP	2010	Mesa Ave	Michigan Ave
Short Rd	5	Chip Seal / RAP	2011	Chelton Rd	End
Southpath Ave	5	Chip Seal / RAP	2010	Peakview Bd	Surface Change
Fountain Pl	4	Chip Seal / RAP	2010	Southpath	Fountain Pl
Sunrise Rd	4	Chip Seal / RAP	2011	Crystal Park Pl	End
Via Chula Vista	3	Chip Seal / RAP	2011	San Miguel	Becker Ln
Cedar Ln	1	Chip Seal / RAP	2011	Width Change	Width Change
Canon Ave	10	Concrete	2010	Bridge	Alpine Tr
Bluff Ave	8	RAP	2011	Pilot Knob St	End
Brook St	8	RAP	0	Ruxton Ave	Church St
Lafayette Rd	8	RAP	0	Lovers Ln	Washington Ave
Mesa Ave	8	RAP	2010	End	Duncan Ave
Spring St	8	RAP	2010	Spring St	Gate
Sunshine Tr	8	RAP	0	Beginning	Washington Ave
Tyler St	7	RAP	0	Terrace Pl	Plainview Pl
Alpine Trail	6	RAP	2013	Canon Ave	Lucerne Tr
Lucerne Trail	6	RAP	2014	Alpine Tr	End
Rock Rd	6	RAP	2013	Minnehaha Ave	End
Spring St	6	RAP	2013	Ruxton Ave	End
Winona Rd	5	RAP	2010	Chipeta Rd	High Rd
Narrows Rd	4	RAP	2011	Canon Ave	End
Rockhill Rd	4	RAP	0	End	Ute Tr
Burn Rd	2	RAP	2011	Washington Ave	End
Winona Rd	2	RAP	2010	End	Chipeta Rd
Arizona Rd	1	RAP	2010	End	Midland Ave
Midland Ave	1	RAP	0	End	Arizona Rd

	Work Type	Status Name	Modified Date	Collected By	Last Modified By	Address	Street Name	Description	Comments
GIS									
1	W/S - GIS	Complete	2016-3-7 09:37	James D	James D	101	Banks Pl	Send Mark Excel spreadsheet of storm drain inlets data	Exported Spreadsheet and emailed it to Mark
2	W/S - GIS	Complete	2016-3-7 09:38	James D	James D	101	Banks Pl	Print out 10 copies of the Trash Can Inventory Map in 11"x17"	Printed and delivered to Shelley
3	W/S - GIS	Complete	2016-3-9 08:22	James D	James D	329	Grandview Pl	Create map of elementary area streets displaying sidewalks, center stripes, cross walks, and stop bars at a 1":20' scale	Created data to display as requested based off of 2012 aerial. Sent draft to shelley for review.
4	W/S - GIS	Complete	2016-3-15 10:28	Rafael E	James D	131	Deer Path Ave	GPS curb stop for 131 Deer Path. Marked with blue paint 131. Fill in holes when done. Remove cones	
5	W/S - GIS	Complete	2016-3-15 10:28	Rafael E	James D	133	Deer Path	GPS curb stop for 133 Deer Path Marked in blue paint 133	
6	W/S - GIS	Complete	2016-3-15 10:28	James D	James D	191	Chelten Rd	GPS Valve at 191 Chelton (1.5", Other type, Closed Right)	

7	W/S - GIS	Complete	2016-3-16 13:29	James D	James D	101	Banks PI	Print out copy of Streets Assessment Mapbook for Lynn	Printed, Assembled and delivered to Lynn's Office
8	W/S - GIS	Complete	2016-3-16 13:37	James D	James D	101	Banks PI	Create map of trails for Mark	Put PDF of map onto his USB
9	W/S - GIS	Complete	2016-3-16 13:37	James D	James D	101	Banks place	Make a map of the Peak View Tot Lot and surrounding property owners, also can you highlight the Tot Lot on the map?	Traced outline of Tot-Lot from 2012 Aerial and displayed ownership per parcel surrounding the park as well as the spatial relation to the city limits. Sent pdf to brad for review.
10	W/S - GIS	Complete	2016-3-16 14:41	James D	James D	218	Illinois Ave	Visit Elk Horn to get lay of the land. Draw in 6" and 1" Water mains on Elk Horn for Rafael	Created Water Main Lines in our Data and exported map for review by Rafael
11	W/S - GIS	Complete	2016-3-16 14:43	James D	James D	101	Banks PI	Export Table of all parcels owned by the city for Ken. Also export pdf map highlighting those parcels	Uploaded Table and PDF map to shared drive/flood recovery/plats

12	W/S - GIS	Complete	2016-3-17 15:19	James D	James D	101	Banks PI	Update utilities information at Elk Horn for Mr. Stauffer.	Created map displaying updates and sent to Mr. Stauffer after Rafael's Review.
13	W/S - GIS	Complete	2016-3-23 16:52	James D	James D	101	Banks PI	Create data of City maintained Flower Beds and deliver Paper & electronic copies to shelley	Drew locations based off of aerial with Jason McNeil's help. Created 9 maps delivered to Shelley. Also calculated total SqFt and count of beds.
14	W/S - GIS	Complete	2016-3-28 14:56	James D	James D	101	Banks PI	Create map of Mills Property for Rafael	Printed map and sent electronic copy to Rafael
15	W/S - GIS	Complete	2016-3-29 08:03	James D	James D	101	Banks PI	Create Urban Renewal Area Shapefile	Exported effected parcels to new layer then merged contiguous parcels to one feature. Added minimal appropriate attributes with location description and area (SqFt)

16	W/S - GIS	Complete	2016-3-30 11:30	James D	James D	101	Banks PI	create maps displaying the potential locations for the mineral springs monitoring well	Created 4 maps (total, and one per location) and sent them to Annie from Shomaker
17	W/S - GIS	Complete	2016-3-30 11:32	Brad W	James D	101	Banks PI	James, I need 8.5" X 11" PDF maps of the trash can locations within the City if you could please. Thanks	Created 7 maps at 1":300' scale. delivered paper & electronic copy to Brad
18	W/S - GIS	Complete	2016-4-5 08:33	James D	James D	101	Banks PI	Send park and trail data to Kate Roppel with Colorado Springs Parks, Recreation & Cultural Services Department	Need to ask shelley if any kind of Licensing agreement is necessary. Forwarded request to Karen. Awaiting Agreement documents from planning.
19	W/S - GIS	Complete	2016-4-5 08:36	James D	James D	101	Banks PI	Create easement GIS layer	Added easement defined by ordinance 1975

20	W/S - GIS	Complete	2016-4-11 09:01	James D	James D	101	Banks PI	Re-size the trashcan inventory map from 11" x 17" to 8.5" x 11"	Re-sized to 8.5" x 11". had to move elements around and re-size in order to fit. Final product sent to Brad.
21	W/S - GIS	Complete	2016-4-11 09:03	James D	James D	101	Banks PI	Create topo maps of the 2015 NRCS EWP Project sites	Created maps of the Mesa Tank, Beckers Ln Drainage, Washington Bypass, and Timberline Baptist Church project sites. Sent electronic copies to Sara and delivered paper copy to her box.
22	W/S - GIS	Work In Progress	2016-3-7 08:22	James D	James D	101	Banks PI	Collect and refile all Water Records. Scan and create new files. Replace originals when finished.	
Water									
1	W/S - Line Flush	Complete	2016-3-29 12:02	James D	James D		S1800	Flush line	Jet Rodded S1800 hand towels clogging line suspected from 13 Minnehaha

2	W/S - Other	Complete	2016-3-1 14:52	James D	James D	329	Grandview Pl	create wicker-bills and probes	made 5 wicker-bills and 5 probes. they are in the front bay by the door in the water shop
3	W/S - Other	Complete	2016-3-2 16:07	Alicia S	John H	420	El Paso Blvd	Check manhole looks good.Talk to owner at 420 El Paso. They must have a problem in their line.	"Pop" manhole and investigate Resident Tammy Gucci (685-0890) called stating a smell is emanating from the manhole and would like someone to "pop the manhole and take a look" and take the necessary action. She did call a couple of weeks ago and called again today to check on the status. Please contact her and let her know your finding. Thank you.
4	W/S - Other	Complete	2016-3-3 11:57	Rafael E	Star S	915	Manitou Ave		Manhole ring and cover replaced for fire sprinkler line vault

5	W/S - Other	Complete	2016-3-4 13:44	Ronnie H	Star S	640	Manitou ave		Leak check
6	W/S - Other	Complete	2016-3-14 15:07	Mike D	Mike D	701	manitou avenue		Repaired sewer clean out cap
7	W/S - Other	Complete	2016-3-16 16:47	Rafael E	John H	140	Clarksley Rd		Check on high pressure complaint
8	W/S - Other	Complete	2016-3-16 16:47	Star S	John H	0	Williams canon		Took water sample from ditch for testing
9	W/S - Other	Complete	2016-3-17 11:59	John H	John H	5	mountain view		Residential sewer inspection
10	W/S - Other	Complete	2016-3-22 16:29	Star S	John H	101	El Paso Blvd		Fix back-flow and new meter at skateboard park
11	W/S - Other	Complete	2016-3-30 14:35	Rafael E	Rafael E	105	Pawnee Ave		Repair curb stop box
12	W/S - Other	Complete	2016-3-31 10:21	John H	John H	101	Banks Pl		Rescued deer stuck in fence to cemetery
13	W/S - Other	Complete	2016-4-7 11:20	Rafael E	Rafael E	68	Waltham		Test water in basement for Chlorine
14	W/S - Other	Complete	2016-4-8 15:48	James D	James D	30	Delaware	Repair curb stop box	Put on new lid
15	W/S - Other	New Request	2016-4-5 09:49	John H	John H	701	Manitou Ave		Installed 4 inch cap on old clean out at library
16	W/S - Water Leak/Repair	Complete	2016-4-4 07:18	Star S	John H	143	Deer Path Ave		Water leak going to be repaired by the person who hit it

17	W/S - Water Leak/Repair	Complete	2016-4-4 14:33	John H	Rafael E	25	Ute Tr		Water main leak
Sewer									
1	W/S - Sewer Back Up/Leak	Complete	2016-3-1 16:05	John H	John H	701	Manitou Ave		Vacced out sewer back up Manitou Library 701 Manitou ave
2	W/S - Sewer Back Up/Leak	Complete	2016-3-16 16:45	John H	John H	0	s630		Sewer back up. Jet rodded massive root collection and cleaned tons of filth
3	W/S - Sewer Back Up/Leak	Complete	2016-4-4 07:20	Star S	John H	143	Deer Path Ave		Waters key
4	W/S - Sewer Line Clean	Complete	2016-3-1 12:22	John H	John H	0	s2745		Jet rodded sewer main segment 2745
5	W/S - Sewer Line Clean	Complete	2016-3-1 12:22	John H	John H	0	s2740		Jet rodded sewer main segment 2740
6	W/S - Sewer Line Clean	Complete	2016-3-1 12:22	John H	John H	0	s4335		Jet rodded sewer main segment 4335
7	W/S - Sewer Line Clean	Complete	2016-3-4 13:52	John H	John H	0	s1805		Jet rodded segment 1805 with 1/2 inch rodded hose

8	W/S - Sewer Line Clean	Complete	2016-3-17 07:56	John H	John H	0	s580		Jet rodded segment s580
9	W/S - Sewer Line Clean	Complete	2016-3-22 16:28	John H	John H	4	Escondido		Jet rodded sewer main segment 2620
10	W/S - Sewer Line Clean	Complete	2016-3-30 14:48	John H	John H	0	s615		Jet rodded sewer main segment s615
11	W/S - Sewer Line Clean	Complete	2016-3-30 14:48	John H	John H	0	s585		Jet rodded sewer main segment s585
12	W/S - Sewer Line Clean	Complete	2016-3-30 14:48	John H	John H	0	s590		Jet rodded sewer main segment s590
13	W/S - Sewer Line Clean	Complete	2016-3-30 14:49	John H	John H	0	s595		Jet rodded sewer main segment s595
14	W/S - Sewer Line Clean	Complete	2016-3-30 14:49	John H	John H	0	s605		Jet rodded sewer main segment s605
15	W/S - Sewer Line Clean	Complete	2016-3-30 14:49	John H	John H	0	s600		Jet rodded sewer main segment s600
16	W/S - Sewer Line Clean	Complete	2016-3-30 15:58	John H	John H	56	Park Ave		Jet sewer
17	W/S - Sewer Line Clean	Complete	2016-3-30 16:16	John H	John H	0	s1855		Jet rodded sewer main segment 1855
18	W/S - Sewer Line Clean	New Request	2016-3-31 13:58	John H	John H	0	s1965		Needs to be jetted

19	W/S - Sewer Manhole Maintenance	Complete	2016-3-2 09:03	John H	John H	701	Manitou Ave		Manhole inspection. Clear and dry
20	W/S - Sewer Manhole Maintenance	Complete	2016-3-8 09:30	Rafael E	Rafael E	139	Clarksley Rd		Manhole inspection. Manhole clean and in good condition
21	W/S - Sewer Manhole Maintenance	Complete	2016-3-8 10:26	Rafael E	Rafael E	142	Clarksley Rd		MH 1540 Manhole clean and in good condition
22	W/S - Sewer Manhole Maintenance	Complete	2016-3-14 11:00	Rafael E	Mike D	143	Clarksley Rd		MH 1530 needs root killer
23	W/S - Sewer Manhole Maintenance	Complete	2016-3-14 11:02	Rafael E	Mike D	7	Willa Ln	Cleaned man hole free of rocks and filth	MH 1555 Manhole needs cleaning
24	W/S - Sewer Manhole Maintenance	Complete	2016-3-14 11:19	Rafael E	Mike D	134	Crystal Park Rd	Used vacuum on vactor to suck root ball and filth out	MH 1565 Manhole needs cleaning

25	W/S - Sewer Manhole Maintenance	Complete	2016-3-14 13:31	John H	John H	15	Arcade	Vacced and washed out manhole	Manhole inspection. Needs cleaned
26	W/S - Sewer Manhole Maintenance	Complete	2016-3-16 10:28	Rafael E	Mike D	227	Santa Fe Pl		Repair asphalt around manhole 1815
27	W/S - Sewer Manhole Maintenance	Complete	2016-3-16 10:38	Rafael E	Mike D	805	Manitou Ave		Repair asphalt around manhole 4620
28	W/S - Sewer Manhole Maintenance	Complete	2016-3-17 10:44	Rafael E	John H	324	Plainview Pl		Repair asphalt around manhole 1785
29	W/S - Sewer Manhole Maintenance	Complete	2016-3-17 11:05	John H	John H	4375			Asphalt around lid
30	W/S - Sewer Manhole Maintenance	Complete	2016-3-17 11:15	John H	John H	4220			Asphalt patch around manhole. 1 bag of cold patch

31	W/S - Sewer Manhole Maintenance	Complete	2016-3-17 15:19	John H	John H	40	Delaware Rd		Manhole inspection
32	W/S - Sewer Manhole Maintenance	Complete	2016-3-22 15:21	John H	John H	208	Oklahoma Rd		Manhole inspection. All good
33	W/S - Sewer Manhole Maintenance	Complete	2016-3-22 15:21	John H	John H	319	Oklahoma Rd		Manhole inspection.
34	W/S - Sewer Manhole Maintenance	Complete	2016-3-22 16:49	John H	John H	56	Park Ave		Clean manhole
35	W/S - Sewer Manhole Maintenance	Complete	2016-3-30 14:41	Rafael E	Rafael E	141	Crystal Valley Rd		Repair manhole ring and cover
36	W/S - Sewer Manhole Maintenance	Complete	2016-3-31 16:00	John H	John H	0	treatment plant Rd		Located 2 manholes

37	W/S - Sewer Manhole Maintenance	Complete	2016-4-5 16:30	John H	John H	2000			Manhole inspection. 5.5 feet. Clean
38	W/S - Sewer Manhole Maintenance	Complete	2016-4-5 16:30	John H	John H	2020			Manhole inspection 4.5 feet. Clean
39	W/S - Sewer Manhole Maintenance	Complete	2016-4-7 09:47	John H	John H	1310			Manhole inspection 1310 clean and flowing
40	W/S - Sewer Manhole Maintenance	Complete	2016-4-7 09:47	John H	John H	1315			Manhole inspection 1315 clean and flowing
41	W/S - Sewer Manhole Maintenance	Complete	2016-4-7 09:47	John H	John H	1320			Manhole inspection 1320 clean and flowing
42	W/S - Sewer Manhole Maintenance	Complete	2016-4-7 09:47	John H	John H	3625			Manhole inspected 3625 clean and flowing
43	W/S - Sewer Replace/Lining	Complete	2016-3-31 16:03	Rafael E	Rafael E	222	Crystal Valley Rd		Sewer inspection

44	W/S - Sewer Video Inspection	Complete	2016-3-22 15:21	John H	John H	104	Oak Pl		Camera sewer line
45	W/S - Sewer Video Inspection	Complete	2016-3-22 16:29	John H	John H	0	s2620		Camera inspected segment 2620 all clean
46	W/S - Sewer Video Inspection	Complete	2016-3-30 14:36	Rafael E	Rafael E	141	Crystal Valley Rd		Video sewer to locate sewer tap
47	W/S - Sewer Video Inspection	Complete	2016-3-31 16:00	John H	John H	0	s600		Video inspection segment 600. Did not record but same bad offsets and cracking
48	W/S - Sewer Video Inspection	Complete	2016-3-31 16:00	John H	John H	0	s1965		Video inspection. New plastic pipe. Needs to be jet rodded
49	W/S - Sewer Video Inspection	Complete	2016-3-31 16:00	John H	John H	0	s585		Video inspect and recorded segment 585. Bad offsets, cracked pipes, and chipped tile.
50	W/S - Sewer Video Inspection	Complete	2016-3-31 16:01	Star S	John H	0	filter plant Ed		Camera s1855 towards the filter plant. Locate manhole 3470

51	W/S - Sewer Video Inspection	Complete	2016-4-5 16:29	John H	John H	101	Banks Pl		S2890
52	W/S - Sewer Video Inspection	Complete	2016-4-5 16:32	John H	John H	0	s2885		Video inspected sewer main segment s2882
53	W/S - Sewer Video Inspection	Complete	2016-4-5 16:33	John H	John H	0	s2880		Video inspected sewer main segment s2880
54	W/S - Sewer Video Inspection	New Request	2016-3-9 14:47	John H	John H	56	Park		Camera sewer line behind old mate bakery
55	W/S - Sewer Video Inspection	New Request	2016-4-8 13:43	John H	John H	29	Delaware		Video sewer service inspection
56	W/S - Sewer Video Inspection	New Request	2016-4-8 13:45	John H	John H	1225	Manitou Ave		Sewer service inspection